

Huntington Park North Royalton, Ohio

Project Type: Storm Water Wetland, Wet Extended Detention, Natural Resource Preservation

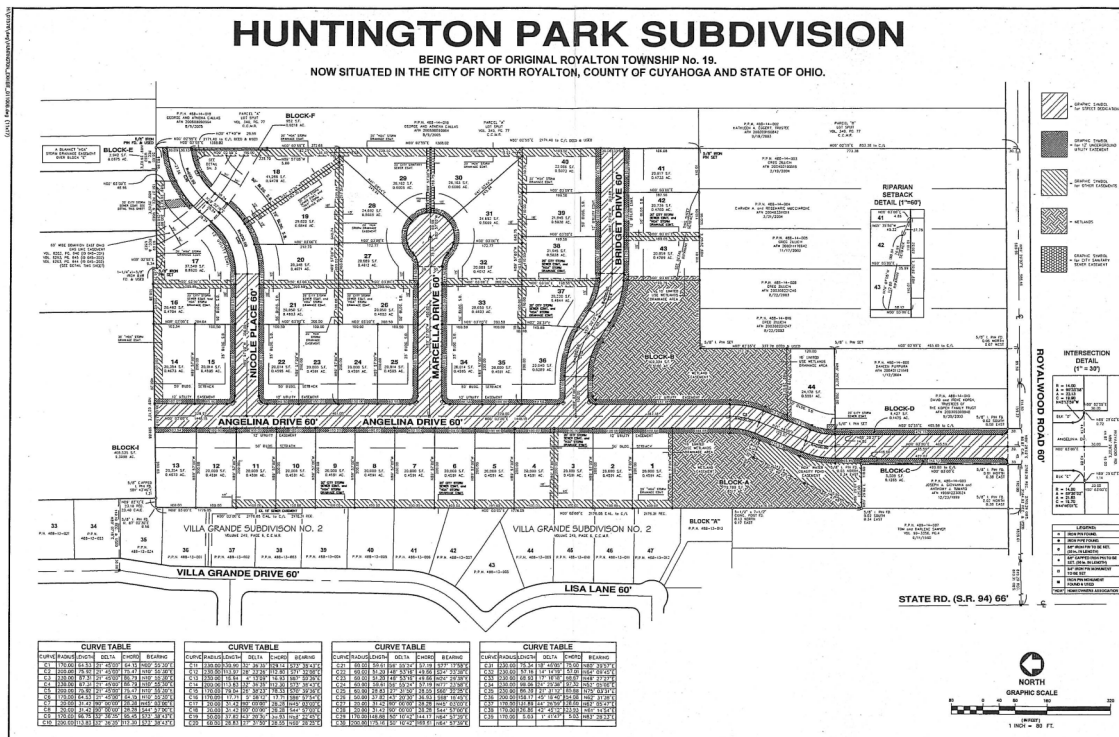
Description and Size: Huntington Park is a 33 acre residential subdivision located in North Royalton at the corner of Royalwood Road and Angelina Drive. The design of this project included a 7,200 square foot storm water wetland, wet extended detention, as well as riparian and wetland preservation. These features have a combined capacity to handle a 100 year storm for the entire subdivision, which is located at the headwaters of Chippewa Creek



Design: This project was designed by Elewski & Associates.

Maintenance: The home owners association will be responsible for long-term maintenance and operation.

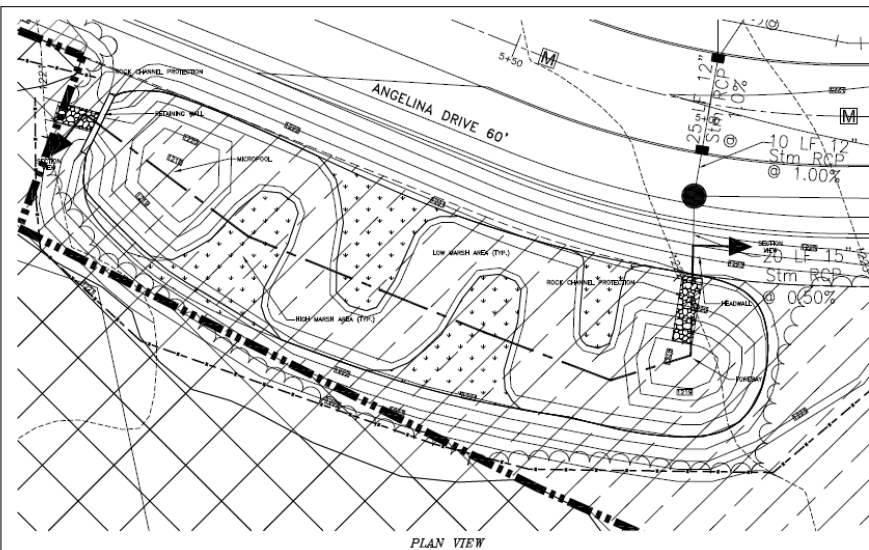
Application: These types of projects can be applied to residential and commercial developments.



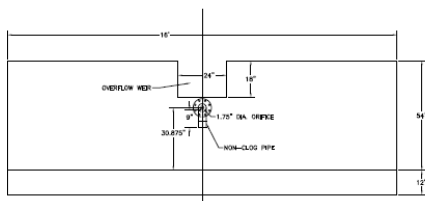
Contact Information:

David Bradt- Engineer
Elewski & Associates
7311 Valley View Drive
Independence, OH 44131
(216) 447-0175

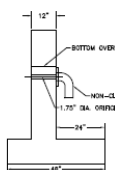
Zillich Homes- Developer
11055 Angelina Drive
North Royalton, OH 44113
(440) 212-7921



PLAN VIEW



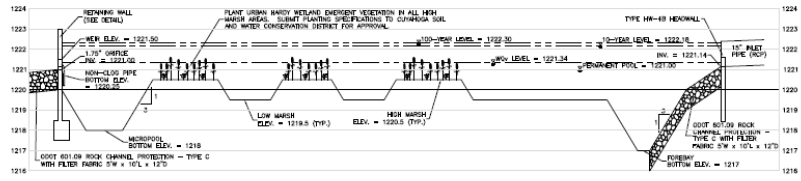
FRONT VIEW



END VIEW

RETAINING WALL DETAIL
NO SCALE

- NOTES:
1. CONCRETE SHALL MEET ALL APPLICABLE REQUIREMENTS OF CONCRETE PRACTICE NOTES, SERIES 5.
 2. REINFORCING FOR RETAINING WALL SHALL BE DESIGNED BY A LICENSED PROFESSIONAL ENGINEER REGISTERED IN THE STATE OF OHIO AND APPROVED BY THE DESIGN ENGINEER. CORNERS ELEVATED 20\"/>
 - 3. RETAINING WALL MAY BE CAST-IN-PLACE, PRECAST WALLS, OR PRECAST IN SECTIONS. IF IN SECTIONS, PROVIDE WATER TIGHT SEAL BETWEEN SECTIONS.
 - 4. NON-CLOS PIPE DRAIN IS CONSTRUCTED OF SAND AND PIPE. CONTRACTOR MAY PROPOSE ALTERNATE METHODS TO CREATE A "NON-CLOS" DRAINAGE.
 - 5. ALL REINFORCEMENT SHALL BE STAINLESS STEEL.
 - 6. ALL REINFORCEMENT SHALL BE EPOXY COATED.



SECTION VIEW

NOTE: ALL PLANTING AREAS AND HIGHER, INCLUDING THE BERMS, SHALL INCLUDE A 6\"/>

DATE	7/20/20
PROJECT	HUNTINGTON PARK SUBDIVISION
WETLAND BASIN SWP3	
NORTH ROYALTON, OHIO	
ELEWSKI & ASSOCIATES INC. Consulting Engineers	
2317 SANDY CREEK DR. INDEPENDENCE, OHIO 44131-0701 440-447-0175	
SCALE	AS SHOWN
DRAWN BY	CHKD BY

